



ERAC $\text{C}\epsilon$ 1837
18

Operation manual

Gas infrared heater



BOGH-15 | BOGH-15E

Code-128

Before operating
study this manual and keep it accessible

Contents

2	Used notation
3	Safety regulations
5	General description
6	Safety instruction
7	Appliance design
12	Specifications
13	Preparation for work
16	Control
19	Maintenance
20	Troubleshooting
21	Transportation and storage
21	Scope of supply
21	Electrical schematic diagram
22	Lifetime
22	Warranty
22	Disposal rules
22	Date of manufacture
22	Product certification

100%
Quality Control

1. Used notation



ATTENTION!

Requirements which, if ignored, may result in serious injury or serious equipment damage.



CAUTION!

Requirements which, if ignored, may result in serious injury or death.

NOTE:

1. In the text of this manual, the infrared gas heater may have such technical names as the device, appliance, apparatus.
2. If the gas hose or gearbox is damaged, it must be replaced by the manufacturer or an authorized service center to avoid serious injury.

3. The device must be installed in compliance with existing local regulations and regulations for the use of gaseous fuel devices.
4. The manufacturer reserves the right to without prior notice to the buyer to make changes in the design, equipment or technology of the product in order to improve its properties.
5. The text and numerical designations of the instructions may be misprints.
6. If, after reading the instructions, you still have questions about the operation of the device, contact the seller or a specialized service center for clarification.
7. On the product there is a label on which the technical characteristics and other useful information about the device are indicated.

2. Safety regulations



ATTENTION!

- When operating an infrared gas heater, follow general safety rules when using gas equipment.
- The infrared gas heater must be protected from shocks, dust and moisture.
- The use of an infrared gas heater in rooms is prohibited: with a relative humidity of more than 98%, with an explosive atmosphere; with biological environment; highly dusty environment; with a corrosive environment for materials.
- Long-term operation of an infrared gas heater without supervision is prohibited.
- Before starting cleaning or maintenance, or during a long interruption in operation, turn off the instrument, shut off the gas supply and disconnect the gas cylinder.
- Never move a working device.
- Shut off the gas supply to the gas cylinder before moving device.
- Do not cover the unit and do not restrict the flow of air. Before turning on the infrared gas heater, remove foreign objects around it. All flammable substances must be removed from the room. Minimum distances in front of an infrared gas heater: - in fig. 1c
- To avoid burns, do not touch the outer surface, as well as the upper part of the case, while the infrared gas heater is in heating mode.
- To avoid injury, do not remove the protective grille from the housing.
- Do not use the device for other than its intended purpose (drying clothes, etc.).
- Do not attempt to repair the device yourself. Contact a qualified technician.
- Replace the gas hose once a year.
- Use only the type of gas and gas cylinder specified in these instructions.
- With strong wind, the product

may be tilted. Pay special attention to tilting the instrument.

- This product can be used outdoors or in a well-ventilated area.

A well ventilated area should have a minimum of 25% open surface area. The surface area is calculated as the sum of the areas of all surfaces of the walls.

- After transportation at negative temperatures, it is necessary to keep the infrared gas heater in the room where it is supposed to be used for at least 2 hours.
- The device is not intended to be used by persons (including children) with reduced physical or mental abilities or in the absence of life experience or knowledge if they are not under control or instructed to use the device by a person responsible for their safety.
- Children should be supervised to prevent play with the device.
- Modification of the device is strictly prohibited, except as specified and approved by the

manufacturer.

- For safety reasons for children, do not leave packaging (plastic wrap, cardboard) unattended.
- Do not allow children to play with plastic wrap. Choking hazard!

CAUTION!

- Never use an infrared gas heater indoors, or near inflammable objects, flammable liquids. Danger of fire!
- During operation, check that the room is adequately ventilated. Use only in well ventilated areas. Insufficient ventilation can lead to carbon monoxide poisoning, smoke, and fires.
- This heater is a fire heater that is not connected to the chimney. While the heater is running, make sure that the room is well ventilated. Do not use the unit in a bedroom, van, boat or any other room with a capacity of less than 80 cubic meters.
- In the event of a gas leak, do not use the device. If the product works, immediately shut off the gas supply. Before reuse,

check the device and repair the leak with a qualified technician.

- Do not install a working heater close to walls, curtains or furniture. The heater must always be turned towards the center of the room. Adjust the position of the heater as described below:

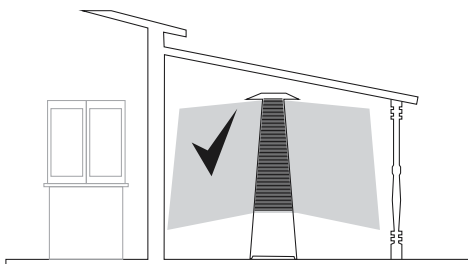


Fig. 1a - Proper placement of the device in an open well-ventilated area

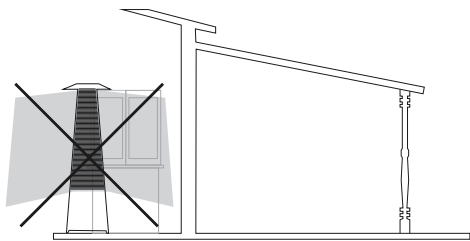


Fig. 1b - Incorrect placement of the device in a closed poorly ventilated room

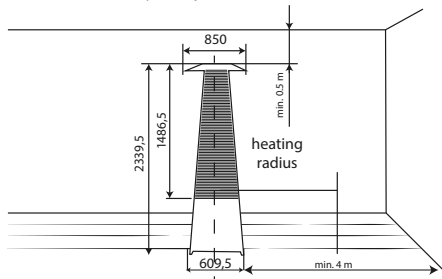


Fig. 1c - Device dimensions and tolerances (0.5 min)

3. General description

Purpose

- Outdoor gas infrared heater has the shape of a trihedral pyramid, the base is made of a metal frame on which decorative panels are mounted. At the base of the device provides a place for concealed installation of a gas cylinder up to 27 liters. On top of the base, there are guides, to which the protective grille, the afterburner and the deflector are fixed. A glass flask made of special glass is installed in special holes (at the base and in the afterburner). The visor is attached to the afterburner.
- Due to the features of the heater, it allows you to heat an area of up to 20 square meters in rooms with good air ventilation, for example: terraces, gazebos, restaurants, cafes, outdoor areas. The device is equipped with an ignition system with an ODS sensor that reacts to the presence of sufficient oxygen for burning; in the event of a lack of oxygen, the device automatically switches off. Also, the device is equipped with a sensor that reacts to the tilt of the device - in case of a falling device, the gas automatically shuts off.
- The BOGH-15E model can be controlled using either an electronic control unit or a remote control panel. Installed remote receiver signals from the remote control. The range of the control panel is up to 3 meters.



ATTENTION!

If the safety instructions and operating instructions for this equipment are not followed, the manufacturer declines responsibility for accidents and damage caused to people, as well as damage to equipment.

4. Safety Instructions

- Carefully read the instructions before use. Familiarize yourself with the device and methods of controlling an infrared gas heater.
- Follow the maintenance instructions and fault table described in this manual.
- Do not block the inlet and outlet of the infrared gas heater.
- Do not block the ventilation openings of the compartment where the gas cylinder is located.
- Do not use infrared gas heaters in basements and other areas below ground level.
- In the room where the infrared gas heater works, there must be constant ventilation in accordance with the technical specifications.
- The size of the room should not be less than specified in the technical specifications.
- The infrared gas heater should not be used in the immediate vicinity of explosive substances.
- Do not heat gas cylinders, even if the cylinder is “frozen”.
- Installation, transportation and storage of gas cylinders should be carried out in accordance with the rules, regulations and instructions for safe operation adopted in your area.
- The product must be repaired only by a qualified, authorized service center worker.
- To ensure safety, always turn off the gas cylinder before disassembling an infrared gas heater, for maintenance, or when the heater is not in use.
- When installing infrared gas heaters, follow the rules and regulations for the installation of similar equipment adopted in your area.
- Replace gas cylinders in a room with sufficient ventilation away from the source of ignition (candles, cigarettes and other sources of ignition and flammable substances).
- Use only special gas cylinders. It is advisable to use only propane gas.
- Sometimes a balloon may be covered with frost - “freeze”. This situation usually occurs when there is not enough gas in the cylinder. To reduce the likelihood of the gas cylinder freezing effect, it is recommended to work with the minimum required gas flow rate. There is a tacit rule that for every kW should be 1 liter of gas, therefore, 13 kW need 13 liters of liquefied gas. For this equipment, you must purchase a suitable gas cylinder (27 l.).

- Never move the unit with a lit flame.
- When replacing a cylinder, check with soapy water or equivalent to see if there is a gas leak from the reducer or from the cylinder.
- Ensure that the gas reducer is installed correctly, securely, and there is a rubber gasket on it.

- 6. Visor stand;
- 7. Removable side cover;
- 8. Non-removable side cover (2 pcs.);
- 9. Upper profile (3 pcs.);
- 10. Protective grille (3 pcs.);
- 11. The top bar for the grille (3 pcs.);
- 12. Chain in lavsan winding with two carabines for fixing the gas cylinder;
- 13. Metal stoppers.

5. Appliance design

5.1 Model BOGH-15

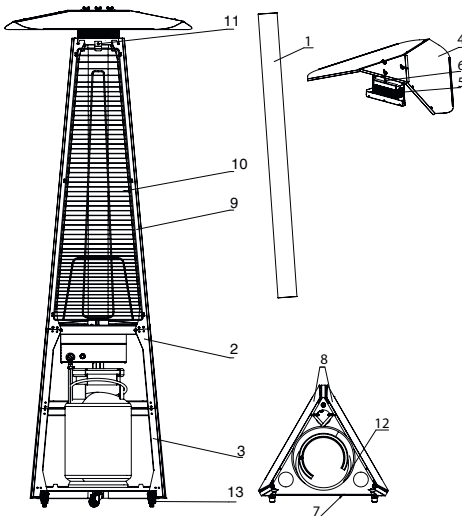


Fig. 2 – BOGH-15 model design

- 1. Glass flask in individual packaging;
- 2. The middle base of the gas heater assembly with the control unit;
- 3. The lower base of the gas heater;
- 4. Visor;
- 5. The afterburner;

Burner design

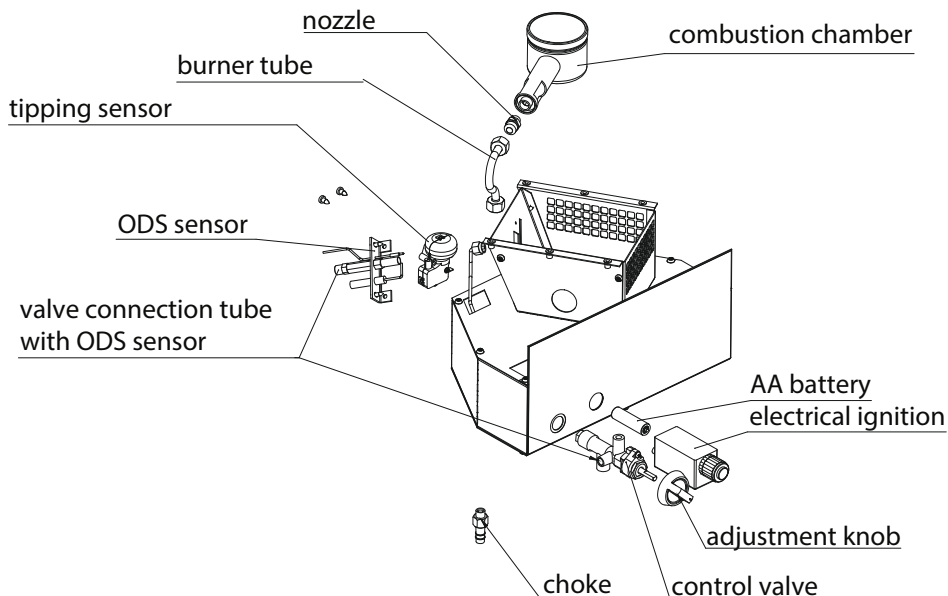


Fig. 3 - Design of the control unit for the model BOGH-15

Battery replacement:

AA battery is used for electrical ignition. To replace the battery, unscrew the ignition cap counterclockwise. Remove the old battery and insert a new one.



IMPORTANT!

- When installing batteries, observe the polarity (+/- contacts). Otherwise, batteries may leak, explode or ignite.
- If the device is not used for a long time, remove the batteries. Otherwise, the batteries may fail (leak or run out).
- If the battery leaks, before inserting a new one, dry the battery compartment dry. If

spilled electrolyte gets into your eyes, rinse them thoroughly with running water. Do not rub your eyes. Contact with electrolyte on clothing or skin is fraught with burns. If this happens, flush the electrolyte with water and seek medical help.

- Used batteries are to be disposed of.
- When disposing of used batteries, follow the instructions indicated on their case and adhere to the regulations established in your country.

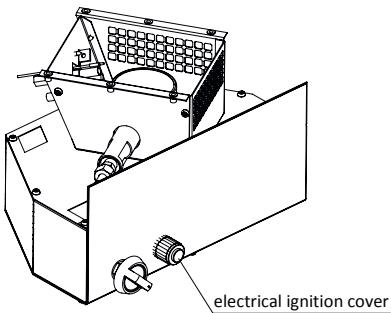


Fig.4 - Replacing batteries for model BOGH-15

5.2 Model BOGH-15E

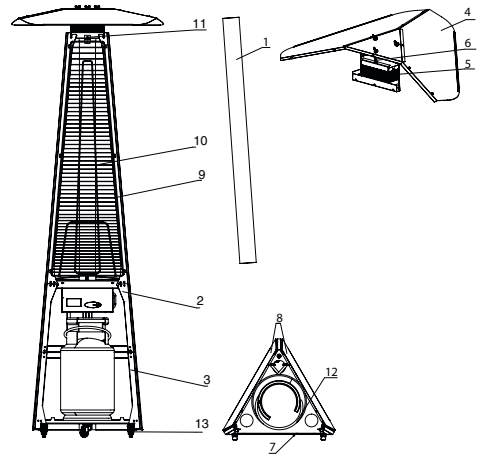


Fig. 5 - Design model BOGH-15E

1. Glass flask in individual packaging;
2. Medium base gas lamp assembly with a control unit;
3. The lower base of the gas lamp;
4. Visor;
5. The afterburner;
6. Visor stand;
7. Removable side cover;
8. Non-removable side cover (2 pcs.);
9. Top profile (3 pcs.);
10. Protective grille (3 pcs.);
11. The top bar for the grille (3 pcs.);
12. Chain in the lavsan winding with two karabinas for fixing the gas cylinder;
13. Metal stoppers.

Burner design

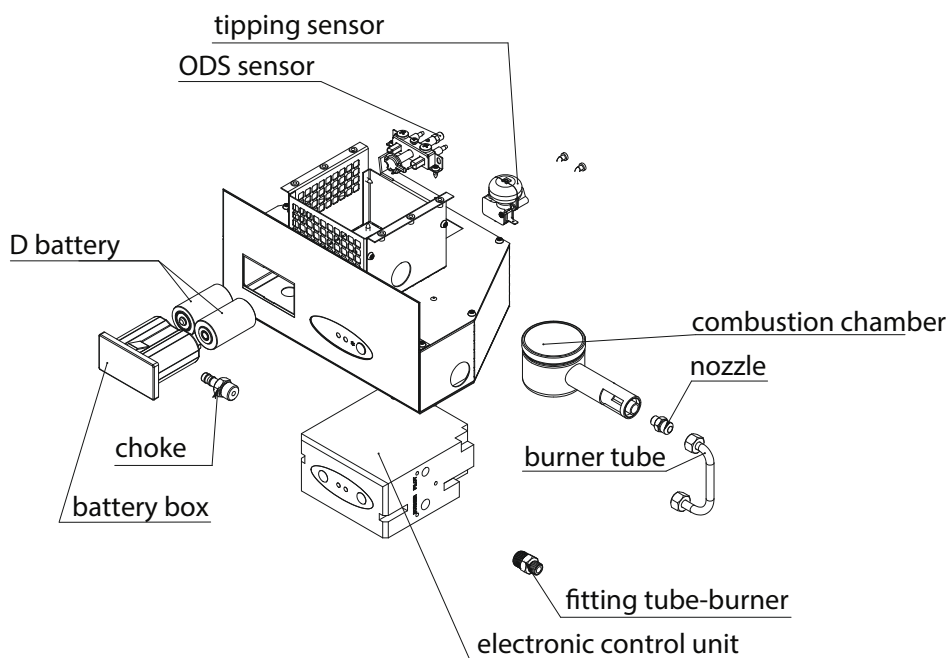


Fig. 6 - Design of the control unit for the model BOGH-15E

Battery replacement

For operation of the device, batteries of type D are used in the amount of 2 pcs. To replace the batteries, open the battery cover, remove the old batteries and install new ones.

The remote control uses AAA batteries in the amount of 2 pcs. To replace the batteries, open the back cover of the control panel, remove the old batteries and install new ones.



IMPORTANT!

- When installing batteries, observe the polarity (+/- contacts). Otherwise, batteries may leak, explode or ignite.
- When installing and replacing batteries, turn off power to the device.
- If the device is not used for a

long time, remove the batteries. Otherwise, the batteries may fail (leak or run out).

- If the battery leaks, before inserting a new one, dry the battery compartment dry. If spilled electrolyte gets into your eyes, rinse them thoroughly with running water. Do not rub your eyes. Contact with electrolyte on clothing or skin is fraught with burns. If this happens, flush the electrolyte with water and seek medical help.
- Used batteries are to be disposed of.
- When disposing of used batteries, follow the instructions indicated on their case and adhere to the regulations established in your country.

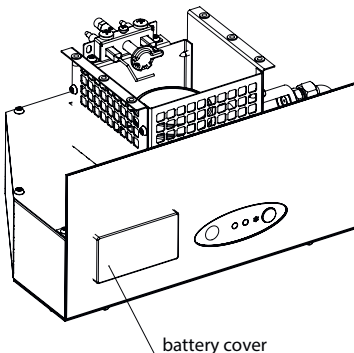


Fig.7 - Replacing batteries for model BOGH-15E

Remote signal receiver

The device is equipped with a sensor that receives commands from a remote control panel.

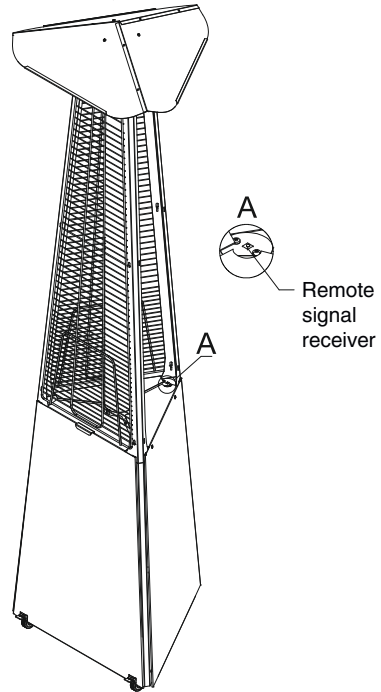


Fig.8 - Sensor position for model BOGH-15E



IMPORTANT!

- For correct and reliable operation, do not allow the sensor to become dirty, do not block or block the sensor with foreign objects.

6. Specifications

Name of parameter	BOGH-15	BOGH-15E
Rated power, kW	13.0	13.0
Gas pressure in the reducer, mbar	37.0	37.0
Gas Consumption (min-max), kg/h	0.3-0.97	0.3-0.97
Fuel type	Propane, propane/ butane	Propane, propane/ butane
Category products	I ₃ B/P	
Country of destination	AT, BE, BG, CH, CY, CZ, DE, DK, EE, ES, FI, FR, GB, GR, HU, IE, IS, IT, LV, LT, LU, NL, NO, PT, SE, SI, SK, TR	
Type of gas	G30/37	
Hose type	Sleeve I-18 -0.63 (I- propane and butane for filling under a maximum pressure of 0.63 Mpa; 18-nominal outer diameter (mm) 9-nominal internal diameter (mm)). Length 50 cm.	
Ignition method	Electrical ignition	Automatic electrical ignition
Volume of the recommended gas cylinder, l	up to 27.0	up to 27.0
Heating radius, m	2-2.5	2-2.5
Heating area, m ²	up to 20	up to 20
Way to move	Built-in wheelbase	Built-in wheelbase
Battery operation	AA-type battery - 1 pc.	D-type battery (LR20) 2 pc.
Battery Remote Control	-	AAA-type battery 2 pc.
Operating current, mA	-	100
Electrical protection class	3 class	3 class
Operating temperature, C°	(up -20 to +30)	(up -20 to +30)
Degree of protection, IP	IP44	IP44
Dimensions of the appliance (WxHxD), mm	847x2410x770	847x2410x770
Package dimensions (WxHxD), mm	1450x560x560	1450x560x560
Net weight, kg	40	40
Gross weight, kg	45	45

7. Preparation for work

To build the device, you will need a screwdriver with a cross (or Phillips) slot;

The assembled afterburner comes 1 assembled with visor racks. For convenience 2

Assembly disconnect the visor from the afterburner.



IMPORTANT!

Always use personal protective equipment - cotton gloves during assembly and heater installation.

For convenience and safety, the heater should be assembled by two people.

- Before assembly, remove the protective film from the parts of the product;
- All necessary screws are pre-tightened into the seats;
- Before assembly, lock the two wheels of the instrument by lowering the metal stop down - This will ensure the stability of the device from unwanted movements.

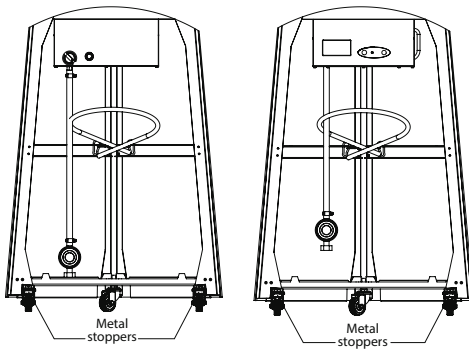


Fig.9 - Installing the stoppers

- Install the profiles on the bottom of the pre-assembled part of the gas heater (Fig. 10). To do this, make a screw in the middle base, which corresponds to a slot in the profile (near the center hole). Install

the profile on this screw and tighten the screw 2, then tighten the screw 1;

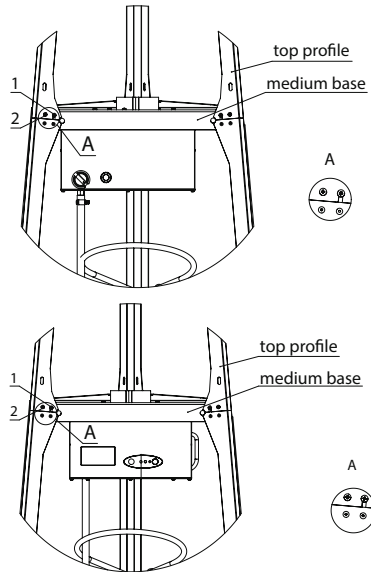


Fig.10 - Installing the top profiles

- Attach the screws to the afterburner for installation in the slots of the upper profiles (Fig. 11)



IMPORTANT!

Assembled afterburner with pre-tightened M4 screws, made of stainless steel in a quantity of 12 pcs. It is not recommended to use galvanized screws, since These screws are not designed for operation at elevated temperatures.

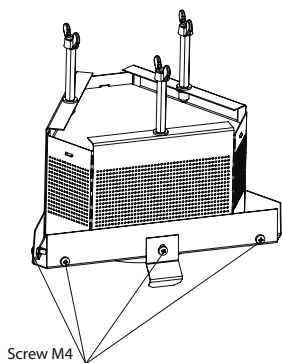


Fig.11 - Installation of screws on the afterburner

- Remove the flask from the box and carefully insert the flask, and install the afterburner onto the profiles (fig.12) from the top, fixing the flask, tighten the screws;

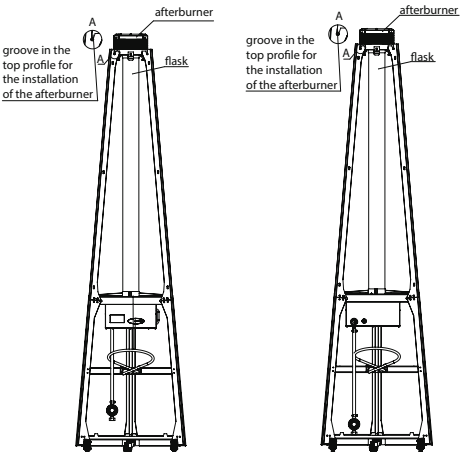


Fig.12 - Installing the flask and the afterburner

- Install the grilles into the grooves of the upper profiles (Fig. 13);

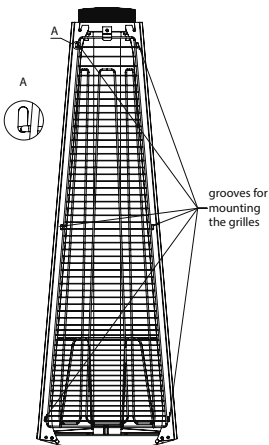


Fig.13 - Grille installation

- • For reliable fixation of the grille, one of the mounting options is possible (a or b):
a) Secure the grille with a strap (Figure 14a);

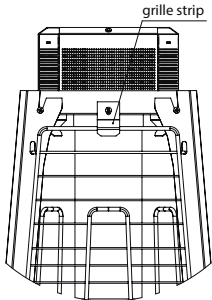


Fig.14a - Grille fastening

- b) Install the grille retainer into the groove in the upper profile (Figure 14b):

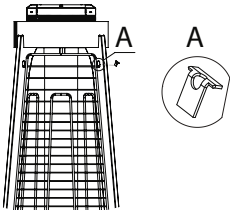


Fig.14b - Install grille lock

- Connect the elements of the visor together, as shown in Fig. 15. Fasten the connections with

M4x8 stainless steel screws. Attach the visor cover with the M4x8 screws to the assembled visor.

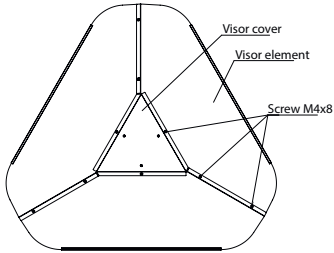


Fig.15 - Assembling the visor

- Install a visor on the afterburner, fasten the visor on stainless steel M6 butterfly nuts (Fig. 16);

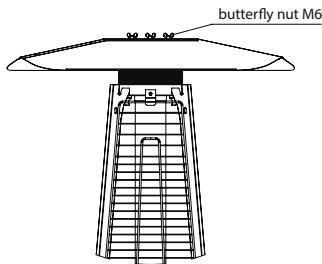


Fig.16 - Installing the visor

- Install side covers, fasten them to countersunk head screws;
- Install the main cover, using magnets on the base of the device;

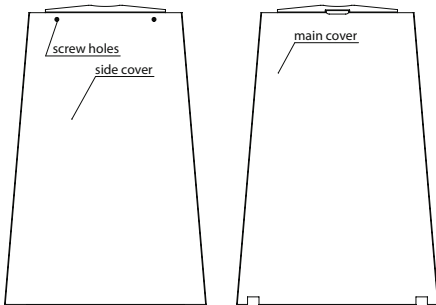


Fig.17 - Main and side covers

- Lift the wheel stopper up and move the device to its destination. Congratulations, you have completed the build!

Gas connections

- Connect the gas pressure regulator (regulator) to the cylinder. The thread on the cylinder and the gearbox is left.
- Tighten the adjuster nut with the wrench to 27.
- Install the cylinder as shown in the pictures 2 and 5.

To assemble the table, you must perform the following steps:

1. remove the side and main covers from the product;
2. unscrew the screws (4) securing the upper profile (1);
3. Get the corner (2) in the slot of the support (3);
4. Insert screws into the holes and tighten them;
5. repeat steps 2-4 for the remaining supports (Fig. 18);

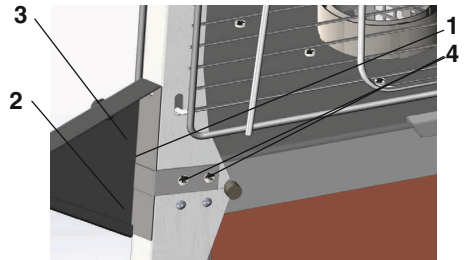


Fig. 18

6. install the stand as shown in Fig. 19, put the bolts into the holes, but do not tighten them with nuts;

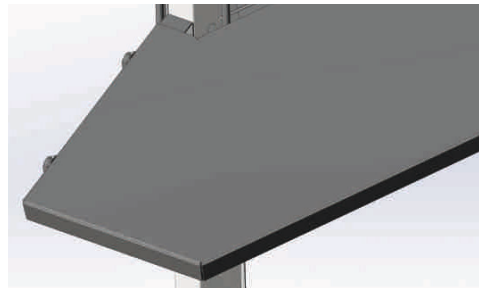


Fig. 19

7. Holding the first stand, install the second stand as shown in Fig. 20, bolt the holes. Put nuts on the bolts, but do not tighten them until the end of the assembly;

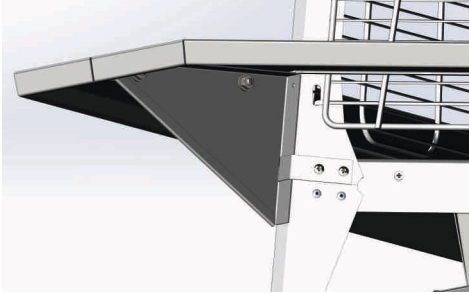


Fig. 20

8. Repeat step 7 to secure the last stand. You should get the following (Fig. 21);

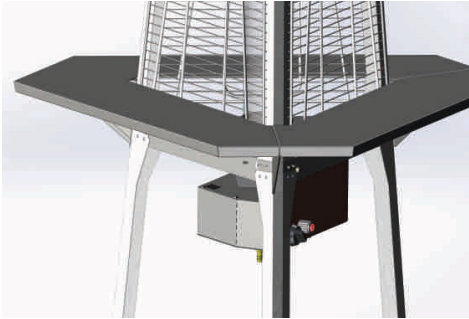


Fig. 21

9. Tighten all bolts with a wrench;

10. Reinstall the side and main covers. Tighten the screws that secure the side covers. Assembly is complete (Fig. 22).

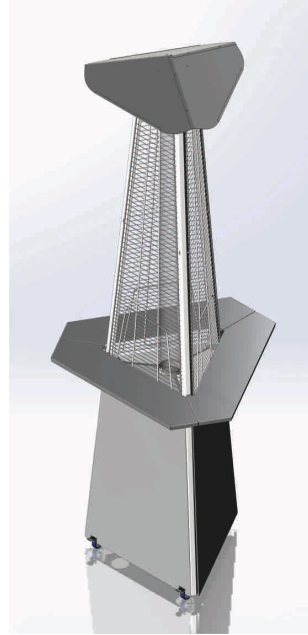


Fig. 22

8. Control



IMPORTANT!

- Before the first start-up of the device, it is necessary to release a part of the gas-air mixture from the gas cylinder by opening the valve for 5-10 seconds. Perform strictly in a well-ventilated area! The air contained in the cylinder forms a mixture with gas vapors, which, when entering the burner, will be unstable. For correct operation of the instrument, after filling the cylinder, it is necessary

to carry out the procedure for removing residual air from the gas cylinder.

- Do not turn on the device without a reflector cover or when disassembled.
- The burner and glass tube must never be completely or partially covered.
- Do not turn on the device if the glass bulb is damaged.
- Protect the device from impacts.
- Always place the device on a sufficiently flat surface (angle of inclination up to 10 °) to prevent it from tilting.
- Do not place the unit on an easily flammable surface (wood, linoleum, synthetic floors, etc.).
- The heater is equipped with a safety device that cuts off the gas supply in case of inclination by more than 45 °.
- When first turned on, the device may emit smoke and odor for a short time.
- After installing the cylinder, the wick is ignited after a while (usually 1-2 minutes). This is due to the fact that there is air in the

gas path and it takes some time to remove it from the gas path.

• Use of the heater at temperatures below 0°C

- When using a heater in frosty or humid weather, it is necessary to turn on the flame to the minimum mode, to warm the glass, after the condensate disappears inside the flask, gradually increase the height of the flame column.
- When the gas temperature drops below 0 ° C, the pressure in the cylinder decreases, and as a result, the height of the flame column may decrease.



IMPORTANT!

- When the air temperature is below + 10 ° C, use high-quality gas, preferably pure propane, otherwise the flame height may decrease.

Startup sequence for Ballu BOGH-15 model:

- Ensure that the device is fully assembled;
- Turn the device in the opposite direction from the wind to avoid blowing out the flame;
- Open the main cover;
- Open the valve on the gas cylinder;
- Press and turn the control knob to the START position.
- Simultaneously press the ignition button until the ignition flame appears (behind the glass on the side of the ceramic panel).
- Continue to hold the control knob in the depressed position for 10-15 seconds after ignition. If the flame goes out when the knob is released, repeat the previous two points.
- Turn the control knob to MIN.
- Press the handle and gently turn counterclockwise. Adjust the height of the flame.
- Close the main cover.
- Enjoy working appliance.



Fig.23 - Control panel for model BOGH-15

Startup sequence for Ballu BOGH-15E model:

- Ensure that the heater is fully assembled;
- Turn the device in the opposite direction from the wind to avoid blowing out the flame;
- Open the main cover;
- Open the valve on the gas cylinder;
- Press the "Power" button on the electronic control panel of the unit, at the same time a beep will sound on the panel and the red LED will automatically process the ignition gas heater starts. The device will turn on for maximum operation;
- If the flame does not appear, repeat the previous step as long as the heater automatically turns on;
- To start the gas heater via the control unit to press and hold the "Power" on the remote control and wait twice the audio signal on the control panel, the green LED lights up. Once again press the "Power" button on the remote control, an alarm will sound and the ignition process of the gas heater starts. The device will turn on for maximum operation;
- If the flame does not appear, repeat the previous step as long as the heater will not start;
- After starting the heater, adjust the flame height using the buttons "Up" and "Down" on the remote control.
- Close the main cover.
- Enjoy working appliance.



IMPORTANT!

- When first switched on, the ignition flame may not appear for some time.

The shutdown sequence for the Ballu BOGH-15 model:

- Open the main cover;
- To disconnect, turn the left knob to the "OFF" position.
- Close the valve on the gas cylinder;
- Close the main cover.

The shutdown sequence for the Ballu BOGH-15E model:

- Open the main cover;
- To disconnect, press the "Power" button on the electronic control panel several times depending on the selected power mode. The order of switching off the device, if the device was at the maximum operating mode
 - press the "Power" button once - the device will switch to the average power mode;
 - press the "Power" button once - the device will switch to the minimum power mode;
 - press the "Power" button once - the device will switch to the fuse mode;
 - press the "Power" button once - the device will turn off.
- To turn off the instrument using the remote control, press the "Power" button on the remote control.
- Close the valve on the gas cylinder;
- Close the main cover;

Moving the appliance:

- Move only the disconnected device;
- The device is equipped with wheels for movement, 2 rear wheels (fixed) with stops, one front wheel freely rotating 360 degrees;
- To move, remove the device from the stoppers that are located on the side of the main cover;
- After moving, be sure to place the instrument on the stoppers.

9. Maintenance



IMPORTANT!

- Before performing any maintenance operations, make sure that the gas supply valve is closed.
- To clean the inside of the glass tube, use a dry soft cloth.
- Use of cleaning products can also cause smudges and stains that will be difficult to remove.
- Periodically check the integrity of the gearbox and hose (once a week and every time you replace the gas cylinder. If cracks, chips or other damage are found, replace the hose with a new one of the same length and the same type). For replacement, use only spare parts made at the heater factory.
- Periodically check the visor of the gas infrared lamp for soot and soot. Clean the visor at least 1 time per week.



IMPORTANT!

- For safety reasons, the gas cylinder can be refilled by no more than 85%. That is, a 12-liter

gas cylinder cannot be refilled for more than 11 liters. and in a cylinder of 27 liters. not more than 23 liters.



IMPORTANT!

- It is recommended to store refilled cylinders at a temperature of not less than + 5 ° C and not more than + 20 ° C.

Pressure regulator

Before using the heater for the first time, it is necessary to check the degree of tightening of the hose clamps, and tighten if necessary.

Damage to the glass flask

- The technical features of the flask are designed to resist thermal shock caused by normal temperature fluctuations, rain or humidity.
- Despite the choice of this material (Borosilicate or Quartz), flask damage may occur as a result of special weather conditions and / or excessive temperature fluctuations.



IMPORTANT!

Damage to the flask (crack) is not dangerous to people or objects in the immediate vicinity of the heater.



IMPORTANT!

Damage to the flask does not interfere with the operation of the heater in the short term, but the flask should be replaced to ensure the normal operation of the heater.

Replacing / cleaning flasks:

If the flask is replaced or if it is necessary to clean it, disassemble the instrument in the reverse order (see the “Preparation” section), remove the flask (use personal protective equipment when disassembling) and clean it.

10. Troubleshooting.

Glitch	The reason	The decision
No flame	The shortage of gas supply (bad Gazi classification of liquefied gas or dirt in the system)/pressure regulator setting Len wrong or defective	Adjust or replace empty cylinder/replace gas
	A sudden gust of wind (above 3 m/s) in the absence of gas panels	Remove heater from direct gusts of wind
	Faulty thermocouple sensor'S SLM	Replace
	Defective solenoid valve	Replace
	Broken fuse or slope of the floor more than 15 degrees	Replace the fuse or move-a on a surface with a slope of less than 15 degrees
	The obstruction in the gas system	Check out and gently
	Gas leak	Check and fix leak
	Isolation of electrodes or cable defect pezopodzhiga	Replace
Soot in a glass flask	"airbag" gas cylinder	Turn the gas cylinder to the gas from-covered area away from ignition sources within 10-15 seconds
	Poor quality gas or gas of non-suitable for winter	Use high-quality gas, one-person chitelnopure propane
	Poor ventilation	Remove the side covers, ventilate the device, mount the side covers
	Mixing chamber of gas mixture for-grjaznena or damaged	Clean/replace
Breakage of the glass flask	The burner is dirty/damaged	Clean/replace
	Thermal shock due to weather conditions	Replace flask
	Unsuitable cleaning tools	Replace flask
Does not light the wick	Accidental drop of the heater	Replace flask
	Clogged nozzles Wick	You must purge the injectors Wick
The appliance does not respond to commands from the remote control	Defective electronic control unit	Replace
	Defective remote control	Replace the batteries or replace remote control
	Defective remote receiver	Replace

11. Transportation and storage



IMPORTANT!

Never store the appliance with one or more gas cylinders.

If the heater is not used for a long time (seasons or for other reasons), follow the instructions below:

- You can store the device in both assembled and disassembled transport.
- Store the device in a dry place, protected from possible damage.
- Always close the burner box and base to avoid spider webs, dust, etc.
- After long-term storage, it is necessary to inspect the device for damage and completeness, as well as to clean the device from dust

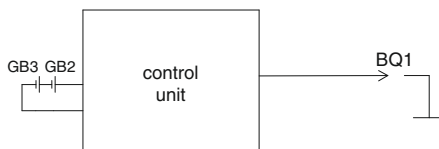
12. Scope of supply

- Glass flask in individual packaging;
- The average base of the gas heater in assembly with a control unit;
- The lower base of the gas heater;
- Afterburner assembly with visor racks;
- collapsible visor
- Removable side cover;
- Non-removable side cover (2 pcs.);
- Top profile (3 pcs.);
- Protective grille (3 pcs.);
- The top bar for the grille (3 pcs.);

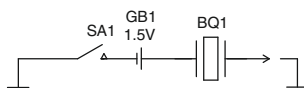
- Screw M4 (24 pcs.), Screw M4 with countersunk head (4 pcs.) Are pre-twisted in the mounting holes;
- AA battery (only for BOGH-15 model);
- Butterfly nut M6 (3 pcs.);
- Battery type AAA (2 pcs.) (Only for the model BOGH-15E);
- Battery type D (LR20) (2 pcs.) (Only for model BOGH-15E);
- Chain in lavsan winding with two carbines for fixing the gas cylinder;
- Operation manual;
- Packaging.

13. The electrical schematic diagram of the model BOGH-15, BOGH-15E

ignition circuit BOGH-15E



ignition circuit BOGH-15



gas leakage protection circuit BOGH-15, BOGH-15E

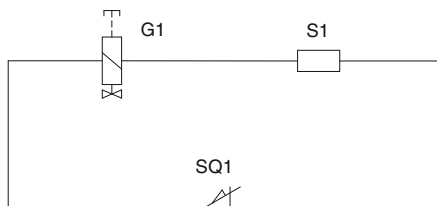


Fig.24 - Electrical schematic diagram

GB2, GB3 - battery 1,5V (type D (LR20));

GB1 - battery 1,5V (type AA);

BQ1 - ignition electrode;

G1 - safety valve;

S1 - thermocouple;

SQ1 - tipping sensor;

SA1 - piezoelectric igniter.

14. Lifetime

The lifetime of the device is 5 years, subject to compliance with the relevant rules for installation and operation.

15. Warranty

Warranty service of the device is performed in accordance with the warranty obligations listed in the warranty card.

16. Disposal rules

Upon expiration of the service life, the device must be disposed of in accordance with the rules, regulations and methods in force at the disposal site.

Do not dispose of the appliance with household waste.

After the life of the device has expired, take it to a collection point for disposal if it is provided for by local rules and regulations. This will help to avoid possible effects on the environment and human health, as well as facilitate the reuse of product components.

Information on where and how to dispose of the device can be obtained from local authorities.



Your device contains batteries. Used batteries are to be disposed of at special collection points located in your country. Do not dispose of batteries with household waste.

When disposing of used batteries, follow the instructions indicated on their case and adhere to the standards established in your country. Information on where and how to dispose of

batteries can be obtained from local authorities. This symbol may be indicated on batteries / batteries that contain harmful substances:

Pb - contains lead;

Cd - contains cadmium;

Hg - contains mercury;

Li - contains lithium.



17. Date of manufacture

The date of manufacture is indicated on the appliance.

18. Product certification

Products comply with the requirements of the following European Directives:

Gas Appliance Regulation (EU) 2016/426

Manufacturer:

Limited liability company

"Izhevsk heating equipment factory"

Address: 426052, Russia, UR, Izhevsk, Lesozavodskaya, 23 / 110

Tel./Fax: +7 (3412) 905-410 / 905-411

Made in Russia





Importer: