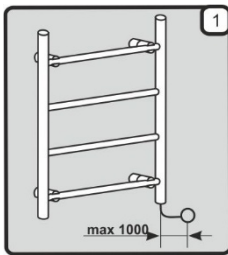
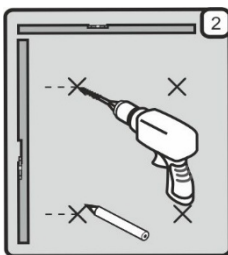


# Installation instruction of electric towel dryer – rail

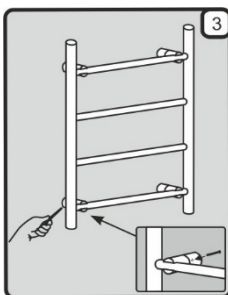


## Set:

- 1 pc dryer body with power cord;
- 4 pc brackets;
- 4 pc bracket fixing bolts;
- 4 pc dryer fixing screws.



Mark the spots on the wall at which the brackets will be mounted. Drill the holes of required diameter, 40 mm in depth. Place the plastic dowels into the holes. Affix brackets to the wall using bolts.



Fix radiator to the brackets. Position the drying bracket at the mounting spot and use the connectors to attach it to the heating system. Fasten the drying brackets with the screws.